

British Council

LearnEnglish Connect

Kiros Langston
English Programmes Manager
British Council Tunisia

Advantages and disadvantages of independent e-learning?

Common European Framework (CEF)

Common Reference Levels - The Global Scale



Proficient	C2	<ul style="list-style-type: none"> • Can understand with ease virtually everything heard or read. • Can summarize information from different spoken and written sources, reconstructing arguments and accounts in a coherent presentation. • Can express him/herself spontaneously, very fluently and precisely, differentiating finer shades of meaning even in more complex situations.
	C1	<ul style="list-style-type: none"> • Can understand a wide range of demanding, longer texts, and recognize implicit meaning. • Can express him/herself fluently and spontaneously without much obvious searching for expressions. • Can use language flexibly and effectively for social, academic and professional purposes. • Can produce clear, well-structured, detailed text on complex subjects, showing controlled use of organizational patterns, connectors and cohesive devices.
Independent	B2	<ul style="list-style-type: none"> • Can understand the main ideas of complex text on both concrete and abstract topics, including technical discussions in his/her field of specialization. • Can interact with a degree of fluency and spontaneity that makes regular interaction with native speakers quite possible without strain for either party. • Can produce clear, detailed text on a wide range of subjects and explain a viewpoint on a topical issue giving the advantages and disadvantages of various options.
	B1	<ul style="list-style-type: none"> • Can understand the main points of clear standard input on familiar matters regularly encountered in work, school, leisure, etc. • Can deal with most situations likely to arise while travelling in an area where the language is spoken. • Can produce simple connected text on topics which are familiar or of personal interest. • Can describe experiences and events, dreams, hopes and ambitions and briefly give reasons and explanations for opinions and plans.
Basic	A2	<ul style="list-style-type: none"> • Can understand sentences and frequently used expressions related to areas of most immediate relevance (e.g. very basic personal and family information, shopping, local geography, employment). • Can communicate in simple and routine tasks requiring a simple and direct exchange of information on familiar and routine matters. • Can describe in simple terms aspects of his/her background, immediate environment and matters in areas of immediate need.
	A1	<ul style="list-style-type: none"> • Can understand and use familiar everyday expressions and very basic phrases aimed at the satisfaction of needs of a concrete type. • Can introduce him/herself and others and can ask and answer questions about personal details such as where he/she lives, people he/she knows and things he/she has. • Can interact in a simple way provided the other person talks slowly and clearly and is prepared to help.

The Common European Framework of Reference for Languages: Learning, Teaching, Assessment has been developed by the Language Policy Division of the Council of Europe (Strasbourg) (c) 2001 Council of Europe, Language Policy Division

British Council

LearnEnglish Connect

British Council LearnEnglish Connect is a new solution for institutions that want affordable English language preparation and recognised assessment for their students.

1. Online English *LearnEnglish Pathways* courses
2. **Support** for learners and teachers
3. *Aptis* assessment for better employability

LearnEnglish Pathways

- High-quality online courses
- Designed around the CEF levels
- Easy to access - anytime, anywhere

Elementary 1

0% finished

Status Active | 0% finished

Result N/A

Detailed report

People

Work and study

Places

Free time

Travel

Grammar and
vocabulary

People

In this module you practise talking about yourself and other people.



Introductions

Not finished | Result: 0%

Enroll



Nationalities

Not finished | Result: 0%

Enroll




Describing people

Not finished | Result: 0%

Enroll


What is it?

- A series of eight, 30-40 hours, self-study courses
- Designed for adult learners of English
- From A1 to B2 levels in the Common European Framework. (i.e. Elementary 1 to Upper Intermediate 2)


LearnEnglish Pathways

guest206@null.com
English
My Profile
Log Out

My Courses



Welcome
Learn English when you want,
where you want with LearnEnglish
Pathways

YOUR COURSES	PROGRESS	AVERAGE RESULT
Elementary 1	30% finished	99%
Elementary 2	0% finished	-
Pre-intermediate 1	0% finished	-
Pre-intermediate 2	0% finished	-
Intermediate 1	0% finished	-
Intermediate 2	0% finished	-
Upper Intermediate 1	0% finished	-
Upper Intermediate 2	0% finished	-

[Privacy and cookies](#)
[Freedom of information](#)

© 2014 British Council
The United Kingdom's international organisation for cultural relations and educational opportunities.
A registered charity: 209131 (England and Wales) SC037733 (Scotland).

Course Breakdown

	Elementary 1	Elementary 2	Pre-intermediate 1	Pre-intermediate 2	Intermediate 1	Intermediate 2	Upper-intermediate 1	Upper-intermediate 2
Module 1	People	Home	Tell me about yourself	Travel experiences	Meeting people	Tourism	Distance learning	The world of work
Module 2	Work and study	Changes	Lifestyles	Entertainment	Shopping	Disasters and emergencies	Festivals	Adventure and exploration
Module 3	Places	Feeling good	Jobs	Shopping and fashion	Travel	Hotels	The media	Finding accommodation
Module 4	Free time	Our world	Stories from history	Technology	Banks	Communications	Crime and the law	The unexplained
Module 5	Travel	Culture	Cities	Change	Tourism	Eating	Sports, health and fitness	Entertainment
Module 6	Grammar and vocabulary	Grammar and vocabulary	Grammar reference	Grammar reference	Grammar reference	Grammar reference	Grammar reference	Grammar Reference

Example Activities

Meeting people

BRITISH COUNCIL | LearnEnglish Pathways Meeting people

Activity

Mike asks Yoshi some more questions

Here are some more questions that Mike asked Yoshi. Put the words in the correct order.

you been Have ever the Museum? Picasso to

1 2 3 4 5 6 7 8

Next

✓ Check Answer

Submit

Reset

Previous 1 2 3 4 5 6 7 Results Next

Meeting people

BRITISH COUNCIL | LearnEnglish Pathways Meeting people

Pronunciation of 'ed' in the simple past

There are three ways to say the 'ed' verb ending in English: /t/, /ɪd/ and /d/. How do we say these verbs? Listen to the examples. Then put them in the correct group.

▶ liked	▶ tasted	▶ studied	▶ watched
▶ stayed	▶ started	▶ travelled	▶ landed
▶ talked	▶ finished	▶ wanted	▶ changed

/t/ ▶

/ɪd/ ▶

/d/ ▶

Transcript

✓ Check Answer

Submit

Reset

Previous 1 2 3 4 5 6 7 Results Next

Support for the learners

- Induction to blended learning
- Online support with Pathways
- Their teachers with face to face classes and speaking that support the online courses
- Online e-tutor support via facebook

Support for the teachers

- Induction to blended learning
- Examples of communicative teaching resources to be used in class that support the students' online contents
- Access to the students' courses to follow learners' progress

Online assessment



- **Reliable**
- **Flexible**
- **Low-cost**
- **Recognised**



Track Record

A proven commercial product with more than 90,000 paid users:

- Tunisia
- Morocco

Globally:

- Chile
- Malaysia
- Georgia
- Brazil
- Uruguay

Pre-intermediate 2

0% finished

Result -% (average result)

Detailed report

Overview

Travel experiences

Entertainment

Shopping and fashion


Technology

Change

Grammar reference

Shopping and fashion


The topic of this module is clothes and shopping. You practise vocabulary to describe clothes and you meet four young people who are going to a party dressed as famous people. You think about different types of shops and you practise comparative adjectives to compare them. There is practice using language to talk about likes and dislikes and you listen to two people talking about where they like to buy their clothes. You also practise superlative adjectives. Finally you listen to two of the young people buying shirts in a shop.



Describing clothes

Not finished


Start



Shopping for clothes

Not finished


Start




Likes and dislikes

Not finished


Start



Describe a shopping area



Shopping for shirts



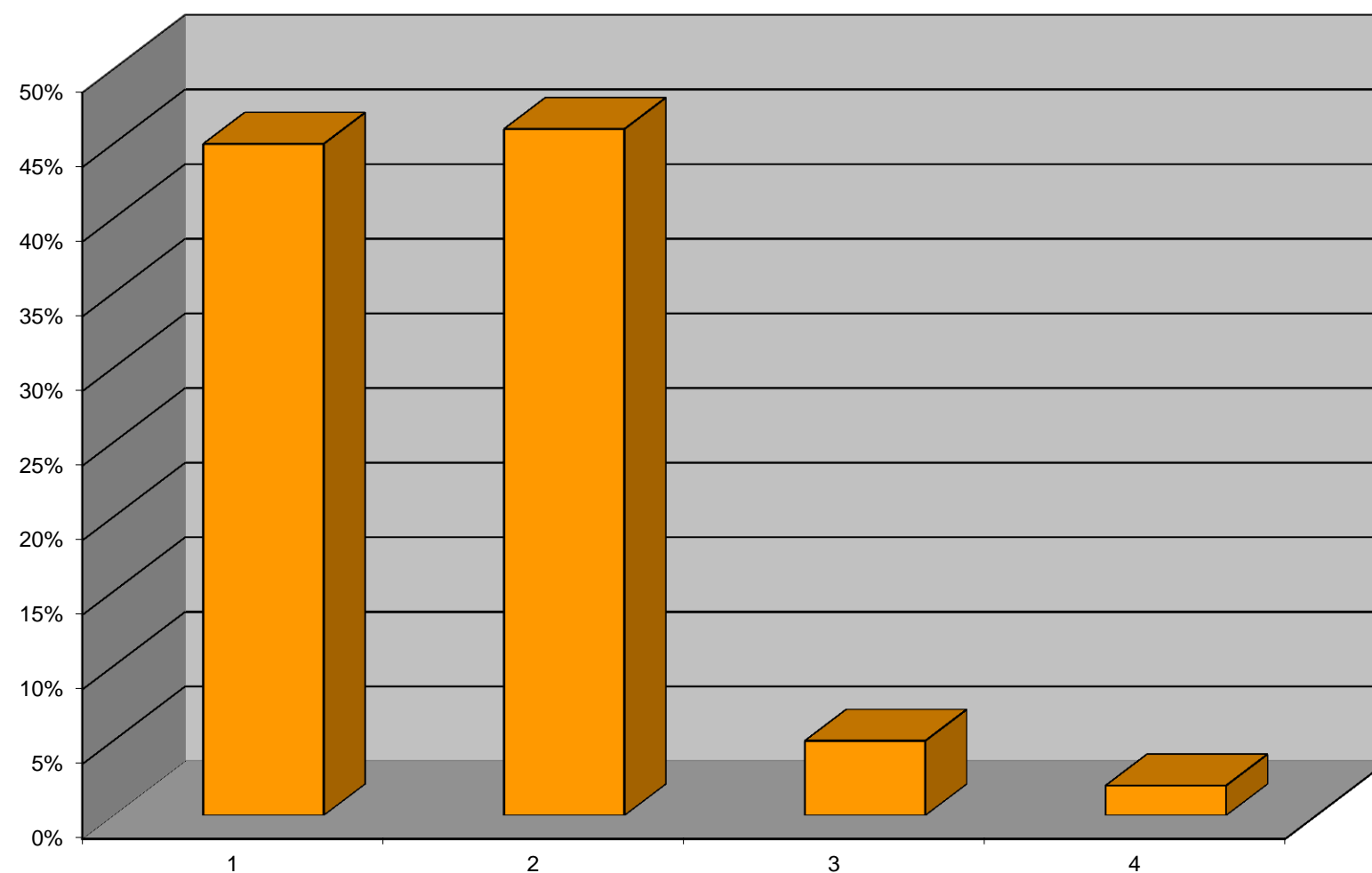
Review

learnenglish-pathways.britishcouncil.org

LearnEnglish Pathways

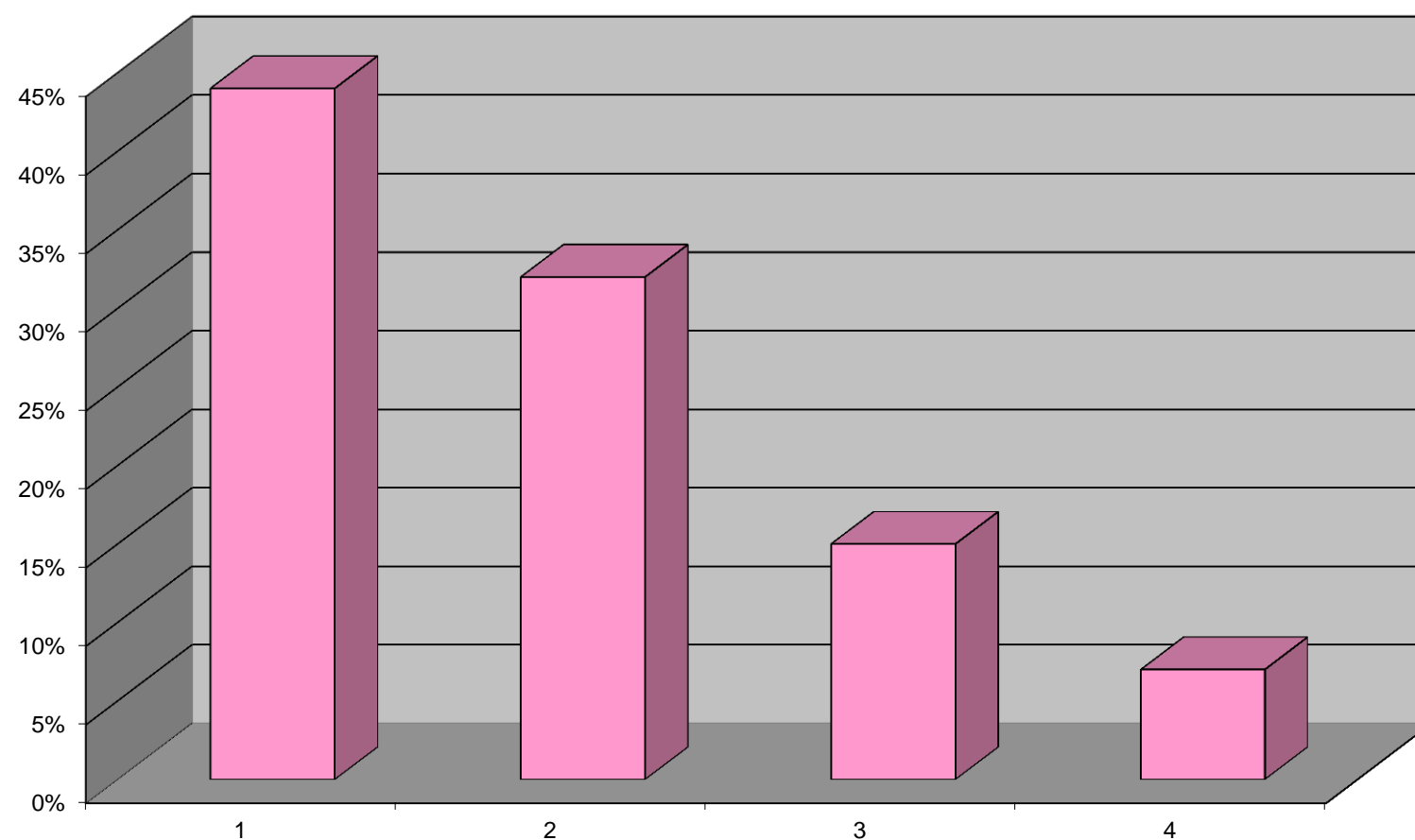
Feedback from the students?

The online content of the course was engaging.



**1) Strongly agree 2) Agree 3) Disagree
4) Strongly disagree**

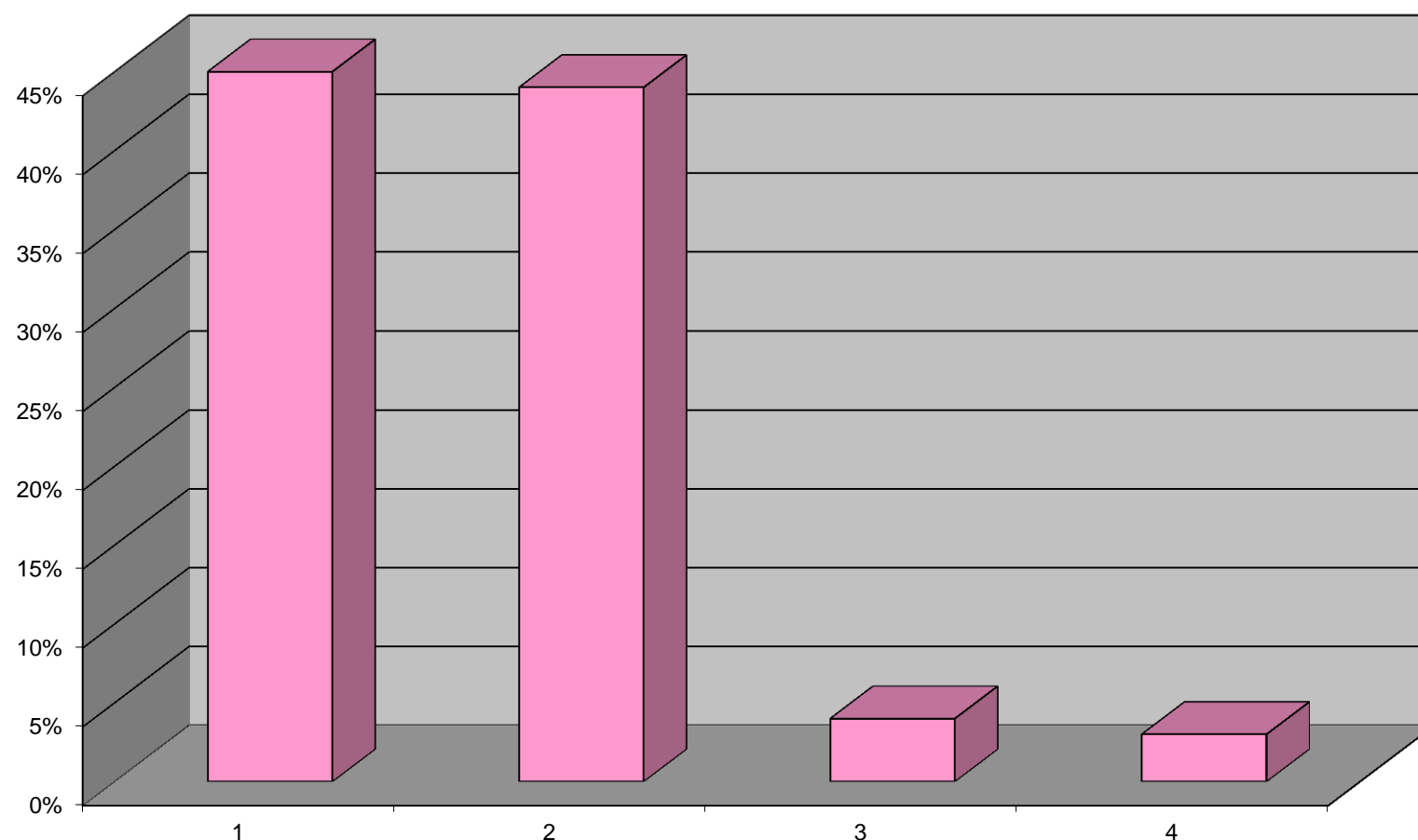
I feel the course has increased my confidence in my IT skills.



**1) Strongly agree 2) Agree 3) Disagree
4) Strongly disagree**

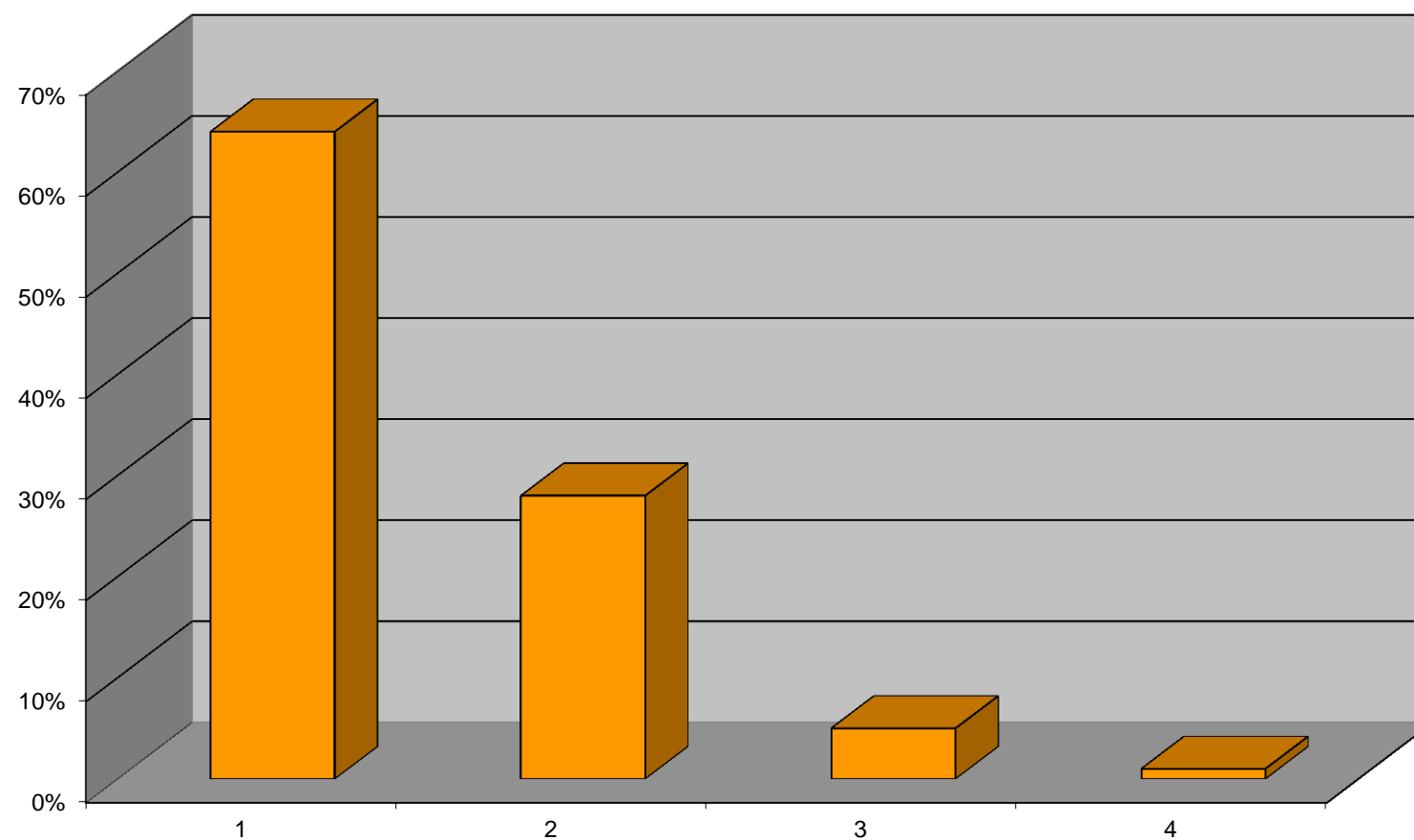
I now have a more positive view of the English language.

I feel more motivated to learn English as a result of this course.



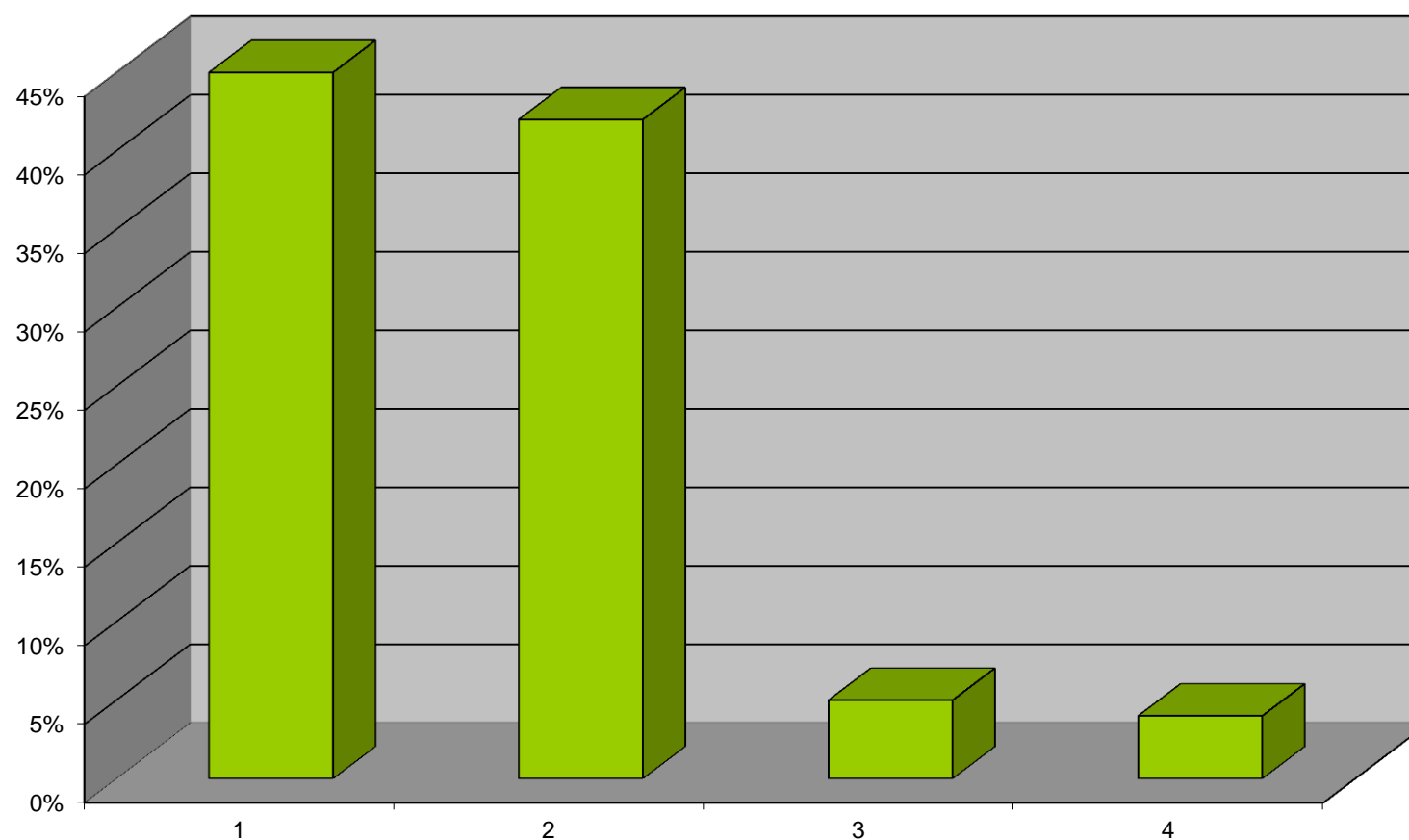
**1) Strongly agree 2) Agree 3) Disagree
4) Strongly disagree**

I like the mix between the online and face to face sessions during the course.



**1) Strongly agree 2) Agree 3) Disagree
4) Strongly disagree**

I would like the course to become part of my studies every year.



**1) Strongly agree 2) Agree 3) Disagree
4) Strongly disagree**

C'est une méthode pratique lorsqu'on a pas assez de temps pour avoir des cours face à face

Online learning is a great method to improve one's level in basics English. For me it's a best source where I can train my competences from time to time.

C'est une expérience extraordinaire
Il est très facile et encourageant

Vu qu'il s'agit de ma première expérience de formation en ligne, j'apprécie cette méthode d'apprentissage

I love your courses, they are really helpful!

Les ressources d'apprentissage de l'anglais nous aident pour bien maîtriser cette langue

Ils sont à la portée de tous les participants, mais parfois on risque de perdre l'accès pour des problèmes techniques, ou de connexion.

Le cours en ligne de British Council est important pour compléter un cours face à face mais il ne suffit pas tout seul pour améliorer les compétences linguistiques d'un étudiant.